



PAKISTAN NOTICES TO MARINERS

WEEKLY EDITION 07

Notice: 30 – 31/24

17 FEB 2024

Copies of these Notices can be obtained gratis from Mercantile Marine Department and PN Chart Depot / NAVAREA IX Headquarters, 11 Liaquat Barracks Karachi. The same can be downloaded from web: hydrography.paknavy.gov.pk.

CONTENTS

- I NOTICES TO MARINERS
- II REPRINTS OF RADIO NAVIGATIONAL WARNINGS
- III CORRECTIONS TO SAILING DIRECTIONS
- IV MARINE INFORMATION

Mariners are requested to inform the National Hydrographic Office, Naval Headquarters, 11 Liaquat Barracks, Karachi, Pakistan, immediately on the discovery of new dangers, or suspected dangers to navigation and of changes or defects in aids to navigation noticed in NAVAREA IX and of shortcomings in PAK charts or publications.

Tel : + 92-21-48506151
+ 92-21-48506152
Fax : + 92-21-99201623
+ 92-21-35867737

E-mail : hydropk@paknavy.gov.pk
hydrpk@gmail.com

Web : hydrography.paknavy.gov.pk.

MUHAMMAD WASIM
Captain Pakistan Navy
Dy HoP

National Hydrographic Office, Naval Headquarters, 11 Liaquat Barracks, Karachi 75530, PAKISTAN

PART – I
NOTICES TO MARINERS

30/24 UNITED ARAB EMIRATES - NM Blocks.**BA Chart 3179 (INT 7229)** [*previous update 53/23*] WGS84 DATUM

Insert the accompanying block, centred on: 24° 32'·5N., 52° 30'·9E.

BA Chart 3780 [*previous update 1660/23*] WGS84 DATUM

Insert the accompanying block, centred on: 24° 32'·2N., 52° 30'·5E.

BA Chart 3951 (INT 7241) [*previous update 5160/22*] WGS84 DATUM

Insert the accompanying block, centred on: 24° 32'·6N., 52° 30'·7E.

Source: Admiralty Notice to Mariners No. 711/2024

31/24 GULF OF OMAN - NM Block.**BA Chart 2853** [*previous update New Edition 22/06/2023*] WGS84 DATUM

Insert the accompanying block, centred on: 24° 29'·5N., 56° 37'·8E.

Source: Admiralty Notice to Mariners No. 730/2024

PART – II
RADIO NAVIGATIONAL WARNINGS

060/24. ARABIAN SEA. Pakistan. Charts PAK 33, 57 (INT 751), BA 38 and 707. Live depth charge firing will be conducted from 101900 to 111900 UTC Feb 24 in area bounded by following coordinates:

23-13.00N 063-55.00E
23-13.00N 064-40.00E
24-00.00N 064-40.00E
24-00.00N 063-55.00E

Mariners cautioned. Cancel this msg on 112100 UTC Feb 24.

061/24. ARABIAN SEA. Pakistan. Charts PAK 33, 57 (INT 751), BA 38 and 707. Missile and gunnery firing with live ammunition will be conducted between 0300 to 1300 UTC daily from 15 to 19 Feb 24 in area bounded by following coordinates:

25-23.00N 063-33.00E
25-20.00N 065-10.00E
24-56.00N 066-10.00E
23-10.00N 066-13.00E
23-10.00N 062-30.00E
25-13.00N 062-30.00E

Mariners cautioned. Cancel this msg 191500 UTC Feb 24.

062/24. ARABIAN GULF. Saudi Arabia (Port Ras Al Khair). Charts BA 2882 and 3575. Following buoys reported unlit:

RAZ 07 27 41.38N 049 22.40E
RAZ 12 27 40.00N 049 20.65E
RAZ 21 27 36.93N 049 16.20E
RAZ 37 27 33.54N 049 11.57E

Mariners cautioned

063/24. PAKISTAN. Karachi Approaches. Charts PAK 5 (INT 7314), 30 (INT 7315), BA 40 and 58. Channel buoy P-2 in position 24-43.92N 066-56.46E reported missing. Mariners cautioned.**064/24.** Buoy No. 24 in position 26-17.10N 050-46.40E operational. Cancel Navarea IX 001/24 and this msg.**065/24. PAKISTAN.** Karachi Approaches. Charts PAK 5 (INT 7314), 30 (INT 7315), BA 40 and 58. Channel buoy P-4 in position 24-44.50N 066-56.95E reported unlit. Mariners cautioned.**066/24.** Channel buoy P-4 in position 24-44.50N 066-56.95E operational. Cancel Navarea IX 065/24 and this msg.

067/24. CENTRAL GULF. Bahrain. Charts BA 3736, 3737 and 3790. Backfilling operation at BAPCO upstream pipeline trench in progress from position 26-11.18N 050-39.25E till position 26-12.04N 050-39.60E. Mariners cautioned.

068/24. ARABIAN SEA. Pakistan. Charts PAK 33, 57 (INT 751), BA 38 and 707. Missile and gunnery firing with live ammunition will be conducted between 0300 to 1500 UTC daily from 15 to 20 Feb 24 in area bounded by following coordinates:

25-23.00N 063-33.00E
 25-20.00N 065-10.00E
 24-56.00N 066-10.00E
 23-10.00N 066-13.00E
 23-10.00N 062-30.00E
 25-13.00N 062-30.00E

Mariners cautioned. Cancel Navarea IX 061/24. Cancel this msg 201500 UTC Feb 24.

069/24. ARABIAN SEA. Pakistan. Charts PAK 33, 57 (INT 751), BA 38 and 707. Live depth charge firing and underwater demolition will be conducted from 171900 UTC till 191900 UTC Feb 24 in area bounded by following coordinates:

25-00.00N 064-05.00E
 24-56.00N 066-10.00E
 23-10.00N 066-13.00E
 23-10.00N 064-05.00E

Mariners cautioned. Cancel this msg on 192100 UTC Feb 24.

070/24. PAKISTAN. Gwadar. Charts PAK 26, 27, 33, 57 (INT 751), BA 38 and 707. Live weapon firing scheduled between 0300-1200 UTC on 20 and 21 Feb 24 in area bounded by arc of radius 20000 meters centered at 25-05.88N 062-22.27E between 130 to 220 degrees clockwise. Mariners cautioned. Cancel this msg 211400 UTC Feb 24.

071/24. SELF CANCELLING. Navigational warnings inforce:

2021 series: 109, 224, 397, 399, 445, 448, 490 and 491.

2022 series: 027, 039, 067, 095, 102, 112, 185, 198, 220, 227, 294, 295, 311, 328, 331, 358, 443, 477, 480, 483, 489, 497, 501, 505, 506, 507 and 513.

2023 series: 025, 028, 034, 058, 067, 068, 070, 071, 094, 096, 102, 103, 110, 111, 116, 120, 124, 131, 135, 138, 159, 177, 190, 201, 221, 226, 237, 245, 263, 266, 284, 293, 299, 307, 314, 315, 318, 326, 338, 340, 341, 346, 355, 359, 371, 372, 376, 378, 398, 404, 410, 412, 415, 420, 430, 435, 437, 439, 447, 448, 453, 455, 457, 460, 462, 464, 467, 468, 472, 473, 475 and 476.

2024 series: 004, 007, 010, 011, 012, 029, 030, 033, 034, 035, 037, 038, 039, 042, 043, 045, 047, 048, 050, 054, 057, 058, 062, 063, 067, 068, 069 and 070.

COASTAL WARNING

020/24. ARABIAN SEA. Pakistan. Charts PAK 33, 57 (INT 751), BA 38 and 707. Live depth charge firing will be conducted from 101900 to 111900 UTC Feb 24 in area bounded by following coordinates:

23-13.00N 063-55.00E
 23-13.00N 064-40.00E
 24-00.00N 064-40.00E
 24-00.00N 063-55.00E

Mariners cautioned. Cancel this msg on 112100 UTC Feb 24.

021/24. ARABIAN SEA. Pakistan. Charts PAK 33, 57 (INT 751), BA 38 and 707. Missile and gunnery firing with live ammunition will be conducted between 0300 to 1300 UTC daily from 15 to 19 Feb 24 in area bounded by following coordinates:

25-23.00N 063-33.00E
 25-20.00N 065-10.00E
 24-56.00N 066-10.00E
 23-10.00N 066-13.00E
 23-10.00N 062-30.00E
 25-13.00N 062-30.00E

Mariners cautioned. Cancel this msg 191500 UTC Feb 24.

022/24. PAKISTAN. Karachi Approaches. Charts PAK 5 (INT 7314), 30 (INT 7315), BA 40 and 58. Channel buoy P-2 in position 24-43.92N 066-56.46E reported missing. Mariners cautioned.

023/24. PAKISTAN. Karachi Approaches. Charts PAK 5 (INT 7314), 30 (INT 7315), BA 40 and 58. Channel buoy P-4 in position 24-44.50N 066-56.95E reported unlit. Mariners cautioned.

024/24. Channel buoy P-4 in position 24-44.50N 066-56.95E operational. Cancel coastal warning 023/24 and this msg.

025/24. ARABIAN SEA. Pakistan. Charts PAK 33, 57 (INT 751), BA 38 and 707. Missile and gunnery firing with live ammunition will be conducted between 0300 to 1500 UTC daily from 15 to 20 Feb 24 in area bounded by following coordinates:

25-23.00N 063-33.00E
25-20.00N 065-10.00E
24-56.00N 066-10.00E
23-10.00N 066-13.00E
23-10.00N 062-30.00E
25-13.00N 062-30.00E

Mariners cautioned. Cancel coastal warning 021/24. Cancel this msg 201500 UTC Feb 24.

026/24. ARABIAN SEA. Pakistan. Charts PAK 33, 57 (INT 751), BA 38 and 707. Live depth charge firing and underwater demolition will be conducted from 171900 UTC till 191900 UTC Feb 24 in area bounded by following coordinates:

25-00.00N 064-05.00E
24-56.00N 066-10.00E
23-10.00N 066-13.00E
23-10.00N 064-05.00E

Mariners cautioned. Cancel this msg on 192100 UTC Feb 24.

027/24. PAKISTAN. Gwadar. Charts PAK 26, 27, 33, 57 (INT 751), BA 38 and 707. Live weapon firing scheduled between 0300-1200 UTC on 20 and 21 Feb 24 in area bounded by arc of radius 20000 meters centered at 25-05.88N 062-22.27E between 130 to 220 degrees clockwise. Mariners cautioned. Cancel this msg 211400 UTC Feb 24.

028/24 SELF CANCELLING. Navigational Warnings Inforce:

2022 series: 024, 027, 060, 063, 081 and 082.
2023 series: 027, 073, 117 and 126.
2024 series: 014, 017, 022, 025, 026 and 027.

WPGs Inforced 2024: 06, 10, 11 and 12
WPGs Cancelled 2024: 08 and 09

PART – III

CORRECTIONS TO SAILING DIRECTIONS

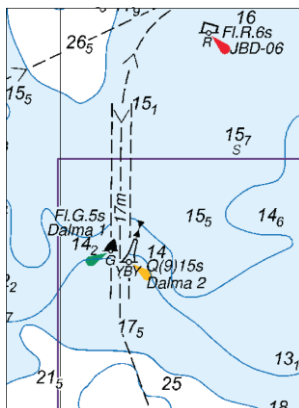
Nil

PART – IV

MARINE INFORMATION

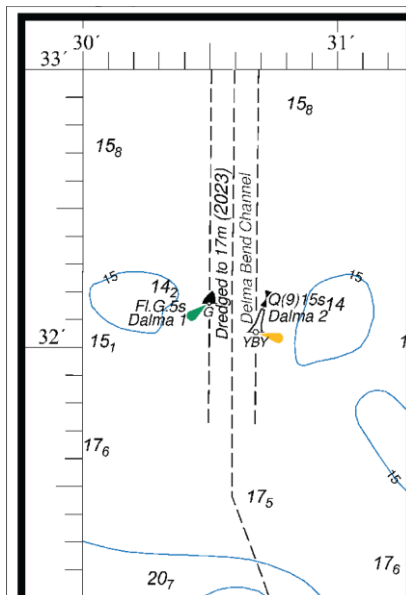
Nil

To accompany Pakistan Notice to Mariners 30/24.



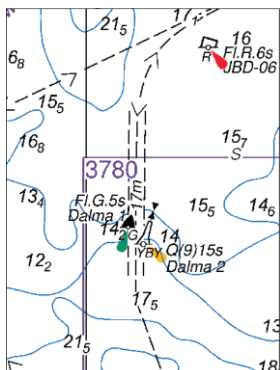
Block for BA Chart No 3179

To accompany Pakistan Notice to Mariners 30/24.



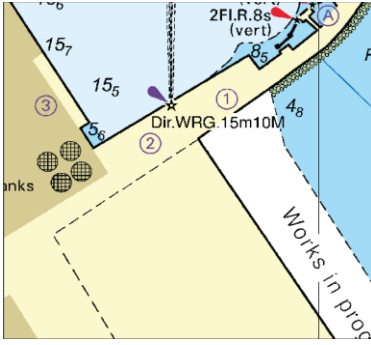
Block for BA Chart No 3780

To accompany Pakistan Notice to Mariners 30/24.



Block for BA Chart No 3951

To accompany Pakistan Notice to Mariners 31/24.



Block for BA Chart No 2853

NP77, Vol D Edition 2023. Weekly Edition No. 7, Dated 15 February 2024.
 Last Updates: Weekly Edition No. 6, dated 08 February 2024.

D1095 FR, L1, 35054	WEST COAST. ESTUAIRE DE LA LOIRE - Banc de Guérande. Offshore Wind Farm. G02	47 12-53 N 2 39-62 W	Fl(2+1)Y 10s	32	5 Wind turbine	<i>fl 0-6, ec 0-6, fl 0-6, ec 1-8, fl 0-6, ec 5-8.</i> This Wind Farm consists of 80 Wind Turbines, some marked by Red Air Obstruction lights
	*		*			*
D1095-04 FR, L1, 35053	- Banc de Guérande. Offshore Wind Farm. F01	47 12-11 N 2 41-43 W	Fl(2+1)Y 10s	32	5 Wind turbine	<i>fl 0-6, ec 0-6, fl 0-6, ec 1-8, fl 0-6, ec 5-8</i>
	*		*			*
D1095-08 FR, L1, 35049	- Banc de Guérande. Offshore Wind Farm. D01	47 10-78 N 2 41-21 W	Fl(2+1)Y 10s	32	5 Wind turbine	<i>fl 0-6, ec 0-6, fl 0-6, ec 1-8, fl 0-6, ec 5-8</i>
	*		*			*
D1095-14 FR, L1, 35045	- Banc de Guérande. Offshore Wind Farm. A01	47 08-84 N 2 41-93 W	Fl(2+1)Y 10s	32	5 Wind turbine	<i>fl 0-6, ec 0-6, fl 0-6, ec 1-8, fl 0-6, ec 5-8</i> MMSI No 992271061
	----- *	..	AIS	*
D1095-22 FR, L1, 35046	- Banc de Guérande. Offshore Wind Farm. A05	47 08-32 N 2 39-02 W	Fl(2+1)Y 10s	32	5 Wind turbine	<i>fl 0-6, ec 0-6, fl 0-6, ec 1-8, fl 0-6, ec 5-8</i>
	*		*			*
D1095-26	- Banc de Guérande. Offshore Wind Farm	47 08-05 N 2 37-54 W	Oc(2)Y 6s	..	2 Wind turbine	..
			*			
D1095-3 FR, L1, 35047	- Banc de Guérande. Offshore Wind Farm. A09	47 07-78 N 2 36-05 W	Fl(2+1)Y 10s	32	5 Wind turbine	<i>fl 0-6, ec 0-6, fl 0-6, ec 1-8, fl 0-6, ec 5-8</i>
	*		*			*
D1095-38 FR, L1, 35048	- Banc de Guérande. Offshore Wind Farm. A13	47 07-24 N 2 33-17 W	Fl(2+1)Y 10s	32	5 Wind turbine	<i>fl 0-6, ec 0-6, fl 0-6, ec 1-8, fl 0-6, ec 5-8</i>
	*		*			*
D1095-42	- Banc de Guérande. Offshore Wind Farm	47 08-04 N 2 31-64 W	Oc(2)Y 6s	..	2 Wind turbine	..
			*			
D1095-46 FR, L1, 35052	- Banc de Guérande. Offshore Wind Farm. E15	47 08-92 N 2 30-01 W	Fl(2+1)Y 10s	32	5 Wind turbine	<i>fl 0-6, ec 0-6, fl 0-6, ec 1-8, fl 0-6, ec 5-8</i> MMSI No 992271058
	----- *	..	AIS	*
D1095-5 FR, L1, 35056	- Banc de Guérande. Offshore Wind Farm. G08	47 09-90 N 2 30-92 W	Fl(2+1)Y 10s	32	5 Wind turbine	<i>fl 0-6, ec 0-6, fl 0-6, ec 1-8, fl 0-6, ec 5-8</i>
	*		*			*
D1095-54	- Banc de Guérande. Offshore Wind Farm	47 10-34 N 2 32-77 W	Oc(2)Y 6s	..	2 Wind turbine	..
			*			
D1095-58 FR, L1, 35055	- Banc de Guérande. Offshore Wind Farm. G04	47 10-72 N 2 34-28 W	Fl(2+1)Y 10s	32	5 Wind turbine	<i>fl 0-6, ec 0-6, fl 0-6, ec 1-8, fl 0-6, ec 5-8</i>
	*		*			*
D1095-62 FR, L1, 35051	- Banc de Guérande. Offshore Wind Farm. E09	47 09-79 N 2 35-11 W	Fl(2+1)Y 10s	32	5 Wind turbine	<i>fl 0-6, ec 0-6, fl 0-6, ec 1-8, fl 0-6, ec 5-8</i>
	*		*			*
D1095-66	- Banc de Guérande. Offshore Wind Farm	47 10-21 N 2 36-54 W	Oc(2)Y 6s	..	2 Wind turbine	..
			*			

D1095-7 FR, I, 35050	- Banc de Guérande. Offshore Wind Farm. E05 *	47 10-60 N 2 37-97 W	Fl(2+1)Y 10s *	32	5 Wind turbine	<i>fl 0-6, ec 0-6, fl 0-6, ec 1-8, fl 0-6, ec 5-8</i> *
D1095-74	- Banc de Guérande. Offshore Wind Farm	47 11-56 N 2 38-85 W	Oc(2)Y 6s *	..	2 Wind turbine	..
D1630-4 ES, I, 02105	- Punta de La Forcada. Landfall	43 35-83 N 5 56-85 W	Fl(1+2)W 14-5s	25	5 White column on white truncated conical tower 4 *	<i>fl 0-5, ec 3, fl 0-5, ec 1, fl 0-5, ec 9.</i> Marks Anchorage
D1632-03 ES, I, 02170	- Curva de Pachico. Second beacon	43 35-52 N 5 55-59 W	Fl(4)R 11s	3	3 Red □ on red post *	<i>(fl 0-5, ec 1-5) x 3, fl 0-5, ec 4-5</i>
D1686-293 ES, I, 03153	- Puerto de Cariño. Wharf. N Corner	43 44-10 N 7 51-89 W	Fl(4)G 11s	..	1 Green metal post *	<i>(fl 0-5, ec 1-5) x 3, fl 0-5, ec 4-5</i>
D1728 ES, I, 03730	NORTH-WEST COAST. ISLAS SISARGAS - Summit of Largest Island	43 21-59 N 8 50-67 W	Fl(3)W 15s	108	23 8-sided masonry tower with white house 11	<i>(fl 0-2, ec 2-8) x 2, fl 0-2, ec 8-8.</i> TE 2024
--	--	--	AIS	MMSI No 992242125 *
D1895-4 ES, I, 04850	- Puerto de Cangas. Inner Breakwater. Wharf. Head	42 15-63 N 8 46-95 W	Fl(2+1)R 15s	..	1 Red lantern	<i>fl 0-5, ec 1-5, fl 0-5, ec 4-5, fl 0-5, ec 7-5.</i> 2m below top of Breakwater *
D2404-4 ES, I, 10652	- Bajo de Poniente	36 23-02 N 6 12-79 W	Fl R 5s	7	2 Red beacon	<i>fl 0-3</i> *
D2815-985	ISLA DE GRAN CANARIA Remove from list; deleted					
D7760	- Khuddi Island	24 33-60 N 67 13-16 E	Fl(4)W 30s	40	14 White round concrete tower, black bands *	.. *
D9162-75	- Bandar-e Pārs. Logistic Port	27 31-14 N 52 33-28 E	Fl(2)R 6s	12	7 Red beacon *	..